

Directors/Adjudicators Handbook

February 13, 2016



Directors/Judges Guidebook Index February 13, 2016

Guidebook Part 1 - Schedule, Rules, General Info & Return Info

I)	Index	2
II)	Welcome Letter	3
III)	Show Choir Competition Information	
A)	Performance Schedule	4
B)	Star Power Official Rules	5
C)	Star Power Scoring Regulations	6
D)	Performance Space Technical Information	7
E)	Sample Scoring Ballot	8
F)	Sample Instrumental Scoring Ballot	9
G)	Awards Ceremony	10
H)	Results Page	11
IV)	Your Arrival	
A)	Directions to Waconia High School	12
B)	Important Unloading Directions – PLEASE READ FOR EASY UNLOADING!!!!	13
C)	Homeroom Assignments	14
D)	Final Preparations – What to Expect	15
V)	General Information	
A)	Parking / Directions	16
B)	Admission/Programs	16
C)	Homeroom	16
D)	Reserved Seating	17
E)	Concessions	17
F)	Videotaping	17
G)	First Aid	17
H)	Guest Parking/Shuttle	17
I)	Bus Driver Information	17
VI)	Return Information	
A)	Best Band and Stage Crew Eligibility Form	18
B)	Stage Set-Up Requirements	19
C)	Solo Microphone Utilization	20

Guidebook Part 2 – Judges & Maps

VII)	Meet The Judges	22-23
VIII)	Maps / Bus Driver Information	
A)	Gymnasium Flow pattern	24
B)	Music Wing Flow Pattern	25
C)	Homeroom Map	26-27

Dear Directors,

Welcome to **STAR POWER “Where show choirs shine” 2016!!!!** The excitement is building in our community and we could not be happier that you will be a part of our Show Choir Celebration.

The Waconia Choir Boosters, the members of Power Company, The Current and the entire community of Waconia are working hard to ensure your experience in Waconia is as memorable as possible. Our philosophy has been to provide a positive, educational environment with outstanding performance facilities and hospitality.

The schedule has been set. The Minnesota All State Choirs are performing the morning of the competition at Orchestra Hall in Minneapolis, so Minnesota schools with All State Singers were scheduled in the afternoon. Returning finalists will perform in the last 6 slots and other schools will be scheduled according to a formula taking into account number of entries, date of receipt, distance traveled, etc.

I hope that you will find all of the information that you will need in this booklet, but if we have missed something, please let us know and we will do our best to get you an answer as soon as possible.

We have been hard at work anticipating your needs and planning each detail so that your experience at **Star Power** will be a memorable one. It is our goal to treat all directors and performers as the stars that they truly are.

Thank you for participating in the 11th Annual Lake Waconia Star Power Show Choir Invitational. Please let me know if there is anything that I can do to assist you as you prepare for arrival to Waconia. I look forward to seeing you soon and good luck to you all as you prepare your groups for competitions

Sincerely,

A handwritten signature in black ink, appearing to read "Aaron Olson". The signature is fluid and cursive, with a long, sweeping underline that extends to the left.

Aaron Olson



Waconia Performing Arts Center

February 13, 2016

Revised 1/19/16

Preliminary Competition - Doors open at 7:15 AM					
Performance	Group	Class	Choir Room	Auditorium	Staging
8:00 AM	The Pulse - Clearwater MS, Waconia, MN	Exhibition	7:00 AM	7:20 AM	7:45 AM
8:20 AM	Valley View Voices - Valley View MS, Bloomington, MN	Exhibition	7:20 AM	7:40 AM	8:05 AM
8:40 AM	Shockwave - Clearwater MS, Waconia, MN	Exhibition	7:40 AM	8:00 AM	8:25 AM
MORNING BREAK 9:00-9:10					
9:10 AM	Natural Selection - Washington HS, Sioux Falls, SD	Class A / Prep	8:10 AM	8:30 AM	8:55 AM
9:35 AM	Encore- Totino Grace HS, Fridley, MN	Class A / Prep	8:35 AM	8:55 AM	9:20 AM
10:00 AM	Impact - Wählert HS, Dubuque, IA	Class A / Prep	9:00 AM	9:20 AM	9:45 AM
10:25 AM	Prima Voce - St Francis HS, St Francis, MN	Class A / Prep	9:25 AM	9:45 AM	10:10 AM
10:50 AM	Spirit Lake Music Factory - Spirit Lake HS, Spirit Lake, IA	Class A / Prep	9:50 AM	10:10 AM	10:35 AM
MORNING BREAK 11:15-11:25					
11:25 AM	State Street Singers - Waseca HS, Waseca, MN	Class A / Prep	10:25 AM	10:45 AM	11:10 AM
11:50 AM	Jefferson Jive - Jefferson HS, Bloomington, MN	Class A / Prep	10:50 AM	11:10 AM	11:35 AM
12:15 PM	La Voce Ballo - Bemidji HS, Bemidji, MN	Class A / Prep	11:15 AM	11:35 AM	12:00 PM
12:40 PM	East Side Swingers - Kennedy HS, Bloomington, MN	Class A / Prep	11:40 AM	12:00 PM	12:25 PM
LUNCH BREAK 1:05- 1:50					
1:50 PM	T-Tones— Totino Grace HS, Fridley, MN	MENS	12:50 PM	1:10 PM	1:35 PM
2:15 PM	Men in Motion - Kennedy HS, Bloomington, MN	MENS	1:15 PM	1:35 PM	2:00 PM
2:40 PM	Rhythm in Red - Vermillion HS, Vermillion, SD	Open	1:40 PM	2:00 PM	2:25 PM
3:05 PM	Classic Connection - Washington HS, Sioux Falls, SD	Open	2:05 PM	2:25 PM	2:50 PM
3:30 PM	Bridge Street Singers, St Francis HS, St Francis, MN	Open	2:30 PM	2:50 PM	3:15 PM
3:55 PM	Impulse - Wählert HS, Dubuque, IA	Open	2:55 PM	3:15 PM	3:40 PM
Afternoon Break 4:20-4:35 PM					
4:35 PM	Company of Singers - Totino Grace HS, Fridley, MN	Open	3:35 PM	3:55 AM	4:20 PM
5:00 PM	The Jefferson Connection - Jefferson HS, Bloomington, MN	Open	4:00 PM	4:20 PM	4:45 PM
5:25 PM	Vocalmotive - Bemidji HS, Bemidji, MN	Open	4:25 PM	4:45 PM	5:10 PM
5:50 PM	Rhythm In Gold - Kennedy HS, Bloomington, MN	Open	4:50 PM	3:55 AM	5:35 PM
6:15 PM	The Current - Waconia, MN	Exhibition	5:15 PM	3:55 AM	6:00 PM
6:40 PM AWARDS CEREMONY					
DINNER BREAK 6:45 - 8:00 PM (Gymnasium will be cleared of all spectators at this time) The Kitchen will be serving Dinner from 4:00 - 8:00 PM - A limited dinner selection will be available for the first two groups performing in finals from 8:45-9:45 PM					
Finals Schedule - Doors open at 7:45 PM					
Performance	Group	Class	Choir Room	Auditorium	Staging
8:00 PM		x	x	7:25 PM	7:50 PM
8:25 PM		x	x	7:45 PM	8:10 PM
8:50 PM		x	x	8:10 PM	8:35 PM
9:15 PM		x	x	8:35 PM	9:00 PM
9:40 PM		x	x	9:00 PM	9:25 PM
10:05 PM		x	x	9:25 PM	9:50 PM
10:30 PM	Power Company - Waconia, MN	Exhibition	9:30 PM	9:50 PM	10:15 PM
11:00 PM Awards Ceremony in Performing Arts Center					

Star Power Official Rules

All Rules apply to all Classes unless specified.

- 1) **The Competition Classes** • Star Power has three separate divisions for competition. “Open Class,” “Class A” and “The Octagon.” The “Open Class” division is for Varsity level mixed groups whose schools have a 9-12 student population of 600 or more. The “Class A” division is for schools that have a 9-12 student population of less than 600. Class A groups may also include Prep or JV groups, and unisex groups of schools with a 9-12 enrollment of greater than 600. “The Octagon is for all Male Groups only. All groups compete within their respective divisions on an equal basis regardless of school size and competition experience. Any group may choose to compete in the Open Class.
- 2) **Preliminary Competition** • All groups will perform once during the morning or afternoon preliminary session. Each group will be scored using the same score sheets regardless of class.
- 3) **Finals competition** • The top six scoring teams after the preliminary competition, will have an opportunity to compete in the Evening Finals Competition regardless of class. All of the same rules will apply for the finals competition.
- 4) **Group Size** • Show Choirs, their instrumentalists, and crews may be any size.
- 5) **Musical Selections** • Groups are free to perform any style and type of music they wish. There is no maximum or minimum number of songs that must be performed. Music does not need to be given to the judges.
- 6) **Accompaniment** • Any type of instrumental accompaniment may be used and is judged as an integral part of the group’s performance. **NO TAPED OR SEQUENCED ACCOMPANIMENTS MAY BE USED.** All performers must be students in your school to qualify for Best Band Award.
- 7) **Directing** • Directors may be on stage with their group and direct if they wish.
- 8) **Logistics** • **ALL EQUIPMENT** must be brought on stage right and removed stage right. Performers may enter from either side of the stage for the performance. Each group’s stage manager or director will be given 2 minutes to set up equipment provided by “Power Company” This time is only for equipment provided by Waconia High School. Immediately after your performance you will be asked to return your equipment to your designated place.
- 9) **Warm-up** - Each choir will be allowed 45 minutes for warm-up. 20 minutes in the choir room for vocal warm-up and 25 minutes in the Auditorium for a show-run through. You will need to be ready to be escorted to the warm-up area 5 minutes before your warm-up time. Each choir must be outside the entrance to the gym 15 minutes prior to its scheduled performance time.
- 10) **Performance Time** • All groups will be allotted Twenty-Five (25) minutes to be used as they wish. This includes set-up, performance and strike. Timing will begin when the first person steps on the stage to begin set-up or when the music starts. Timing will stop when all equipment brought onto the stage is removed and the last person has stepped off the stage.
- 11) **Lighting** • We will once again have intelligent lighting available for your show. You are welcome to sit with the Lighting Engineer during your show to provide direction on what you would like. The house lights will be off and the stage well lit during each performance.
- 12) **Pyrotechnics** • For the safety of all, **NO** form of fire, firearm or pyrotechnics is allowed on stage. If any doubt regarding what may be used, contact Aaron Olson prior to coming to Waconia.
- 13) **Stage-crew** • You may have as many stage-crew members as needed. An award will be given for most efficient stage crew. Your hosts will assist your stage crew in seeing that your equipment is in the arena at the proper time.
- 14) **Entrance to Performance areas** • No one will be allowed to enter or exit the arena during performance.
- 15) **Outside Food** • No outside food will be permitted without special permission from Aaron Olson and will only be permitted under extreme circumstances.

Star Power Scoring Regulations

All Scoring Regulations apply to both Open Class and Class A unless specified.

- 1) **Preliminary scoring** • Star Power will be adjudicated by 3 judges all using the same scoring criteria. There will be a total of 750 points possible in the prelims (250 for each judge). There will be 13 Vocal (130 Points), 9 Visual (90 Points), and 6 Overall criteria (30 Points) per judge. An Instrumental judge will also be used to score the instrumental accompaniment (50 Points).
- 2) **Preliminary Ties** • Ties in preliminary scoring will only be broken if there is a tie for sixth place. In the event of a tie for sixth place, the following criteria will be used to break the tie beginning with criteria (a) and working down to criteria (c).
 - A) Highest overall “vocal” score will win (if still tied use criteria B)
 - B) Highest overall “visual” score will win (if still tied use criteria C)
 - C) If still tied, an additional spot will be added to the evening finals, and seven groups will compete in finals.
- 3) **Finals Selection** • The top six scoring teams after the preliminary competition, will have an opportunity to compete in the Evening Finals Competition regardless of class. In the event that one or more qualifying groups is unable to perform in the evening finals, the next highest scoring ensemble will be given the opportunity to compete in finals.
- 4) **Finals Performance Order** • The top six scoring teams will perform in the same order as prelims. Of the top six finalists, the first group to perform in prelims will perform first in Finals. The second group to perform in prelims will go second in finals and so on. In the event that one school has two groups in finals, The varsity group will perform no earlier than the 4th spot in Finals. This ensures that one school will not have two groups performing back to back in finals and that each school should have ample time to prepare for finals. It will also ensure that the judges do not know the placements going into finals.
- 5) **Finals Scoring** • The same adjudication forms and Judging panel will be used for both preliminaries and finals with the possible addition of the afternoon critique judges. In the finals, all penalties will be assessed and rankings will be determined from the adjudication forms. Each judge will establish a first place choir (21 points) second place (19 points) third place (16 points) fourth place (14 points) fifth place (11 Points) sixth place (9 Points), Seventh place (6 points). The ranking points will be added together to determine final placement. The instrumental judge will not be utilized at finals.
- 6) **Ties in Finals** • Ties in finals will not be broken. In the event of a tie, schools that are tied will each receive a Trophy and be announced as tying for that placing.
- 7) **Penalties** • Points may be deducted from your score for any of the following reasons:
 - A) The use of performers who are not officially students of your school. - Disqualification may occur.
 - B) Fifty (50) points will be deducted from your score for Violation of rule No. 12 (Pyrotechnics) Points may be deducted or disqualification may occur for not adhering to the performance rules.
 - C) Fifty (50) points will be deducted from your score for violating rule No. 15 (Outside Food) Points may be deducted or disqualification may occur for not adhering to the performance rules.

Performance Space Technical Information

Gymnasium

Stage • The stage is 44' wide x 40' deep and raised 24" off the gym floor. On the stage you will have 10' of unrestricted space in front of the risers and 12' behind the risers for the instrumentalists. There is a set of steps on both stage right and stage left.

Risers • We will use a set stage consisting of four rows of four platforms, 4' x 8' each. The heights of the risers are 8", 16", 24", and 32".

Stairs • Stairs will be provided at the end of the risers for the C and D risers. There are also stairs both stage left and right to get on to the stage.

Ramp • Hey we have an 8' x 4' ramp on Stage right to assist you with getting things onto the stage. This should be a big help to those with larger heavier props.

Equipment • We will provide an upright Kawai piano, chairs, music stands, electrical power strips, sound system. You may also request to borrow large percussion instruments, trap set, and a variety of instrument amplifiers. If you need any large equipment, please contact Aaron Olson at least two weeks prior to Star Power.

Microphones • We will also provide 5 wireless microphones for soloists.

Changing Stations • Star Power will provide changing stations on the gym floor on both stage right and stage left, well out of view of the audience but convenient for your quick costume changes. Each changing room will be approximately "Gynormous". Please do not bring your changing stations.



Overall • 30 points possible											
<i>Effective Pacing of Show and Transitions</i>	0.5	1	1.5	2	2.5	3	3.5	4	4.5	5	
<i>Quality and Integration of Instrumental Ensemble</i>	0.5	1	1.5	2	2.5	3	3.5	4	4.5	5	
<i>Balance, blend, Intonation of Musical Instruments</i>	0.5	1	1.5	2	2.5	3	3.5	4	4.5	5	
<i>Costuming / Physical Appearance</i>	0.5	1	1.5	2	2.5	3	3.5	4	4.5	5	
<i>Audience Appeal</i>	0.5	1	1.5	2	2.5	3	3.5	4	4.5	5	
<i>Show Creativity</i>	0.5	1	1.5	2	2.5	3	3.5	4	4.5	5	

Comments

Grand Total



Star Power 2016

Instrumental Adjudication

Instrumental • 50 points possible

Intonation	0.5	1	1.5	2	2.5	3	3.5	4	4.5	5	
Tone Quality	0.5	1	1.5	2	2.5	3	3.5	4	4.5	5	
Balance/ Blend	0.5	1	1.5	2	2.5	3	3.5	4	4.5	5	
Rhythmic Precision	0.5	1	1.5	2	2.5	3	3.5	4	4.5	5	
Dynamics	0.5	1	1.5	2	2.5	3	3.5	4	4.5	5	
Tempo	0.5	1	1.5	2	2.5	3	3.5	4	4.5	5	
Support of vocals	0.5	1	1.5	2	2.5	3	3.5	4	4.5	5	
Transitions	0.5	1	1.5	2	2.5	3	3.5	4	4.5	5	
Control	0.5	1	1.5	2	2.5	3	3.5	4	4.5	5	
Showmanship	0.5	1	1.5	2	2.5	3	3.5	4	4.5	5	
Grand Total											

Comments

Adjudicators Signature _____

Awards Ceremony

Waconia's "The Current" will close the afternoon session. The daytime awards will be presented; (including the Class A awards, and best male and female soloists within a show.) The six finalists will then be announced. The following format will be used for the presentation of Awards:

Preliminary Awards

Participation Trophies Participation Trophies will be handed out to all performing groups that do not place. (Top 6 Class A and Top 6 Open Class)

Outstanding Female Soloist in a show
Outstanding Male Soloist in a show

Best Stage Crew
People's Choice Award
Best Band

Men's Division Runner-up
Men's Division Champion

Fifth Runner-up Trophy in Class A
Fourth Runner-up Trophy in Class A
Third Runner-up Trophy in Class A
Second Runner-up in Class A
First Runner-up in Class A
Champion in Class A

1. Following these awards, the top six scoring groups from the preliminary round will be announced as finalists.
2. All schools may pick up their judging forms and critique recordings after the final results are completed.

Finals Awards

1. "Power Company" will perform in exhibition while the evening scores are being tabulated. The final awards presentation will be announced as follows:

Fifth Runner-up Trophy
Fourth Runner-up Trophy
Third Runner-up Trophy
Second Runner-up Trophy
Best Choreography Trophy
Best Vocals Trophy
First Runner-up Trophy
Grand Champion

We ask that the entire Grand Champion group be prepared to take the stage after the announcement

Star Power – Preliminary Results Page

Outstanding Female Soloist in a Show _____

Outstanding Male Soloist in a Show _____

Best Stage Crew _____

People's Choice Award _____

Best Band _____

Fifth Runner-up in Class A _____

Fourth Runner-up in Class A _____

Third Runner-up in Class A _____

Second Runner-up in Class A _____

First Runner-up in Class A _____

Class A Champion _____

Men's Division Runner-up _____

Men's Division Champion _____

Finalist 1 _____

Finalist 2 _____

Finalist 3 _____

Finalist 4 _____

Finalist 5 _____

Finalist 6 _____

Star Power – Finals Results Page

Fifth Runner-Up _____

Fourth Runner-Up _____

Third Runner-UP _____

Second Runner- Up _____

Best Visual Ensemble _____

Best Vocal Ensemble _____

First Runner-Up _____

Grand Champion _____

IV. Your Arrival

A. Directions To Waconia High School

From the North – Bemidji

Take 35 South to 694 West.

Take 694 West/South to Hwy 5 West.

Take Hwy 5 West to Waconia. Once you enter Waconia you will pass the Hospital on your right and a Ford Dealership on your left. Busses should take a right at Cty Road 10/32. Follow that road to Pond Lane (Country Ponds Housing Development – Just past the ball fields) and veer left to Wildcat Way. This will take you directly to Waconia High School. We will have signs to direct you to the proper entrance. By coming this way, you will avoid having to make a U-Turn in a bus with a trailer. (See the map in your director's packet)

From the East - Bloomington

Take Hwy 5 West to Waconia. Once you enter Waconia you will pass the Hospital on your right and a Ford Dealership on your left. Busses should take a right at Cty Road 10/32. Follow that road to Pond Lane (Country Ponds Housing Development – Just past the ball fields) and veer left to Wildcat Way. This will take you directly to Waconia High School. We will have signs to direct you to the proper entrance. By coming this way, you will avoid having to make a U-Turn in a bus with a trailer. (See the map in your directors packet)

From the South – Iowa/Albert Lea

Take 35 North to 494 West.

Take 494 West to Hwy 5 West.

Take Hwy 5 West to Waconia. Once you enter Waconia you will pass the Hospital on your right and a Ford Dealership on your left. Busses should take a right at Cty Road 10/32. Follow that road to Pond Lane (Country Ponds Housing Development – Just past the ball fields) and veer left to Wildcat Way. This will take you directly to Waconia High School. We will have signs to direct you to the proper entrance. By coming this way, you will avoid having to make a U-Turn in a bus with a trailer. (See the map in your director's packet)

From the West (212) – Nebraska

Take 212 east towards Chaska. Take Hwy 5 east off of 212

Take Hwy 5 East into Waconia. Take a left onto Oak Ave (First set of Stop and Go Lights) Go past the high school entrance to the second stop sign (Cty Rd 10/32) go left and go one block to Pond Lane (Country Ponds Housing Development – Just past the ball fields) and veer left to Wildcat Way. This will take you directly to Waconia High School. We will have signs to direct you to the proper entrance. By coming this way, you will avoid having to make a U-Turn in a bus with a trailer. (See the map in your director's packet)

B. Important unloading directions – PLEASE READ!!!!

- **Arrival** - Your bus should arrive at the North Entrance to the school. Please follow the Star Power Signs as you enter Waconia. A welcoming committee will be on hand to greet your bus. Please have all students remain on the bus until our greeters and student hosts have had an opportunity to meet you and stamp the hands of all performers and you have received your informational packet and director's nametag.
- **Performer Stamps and Wristbands - Performer Stamps** • Only performers will be stamped. Directors will get a nametag (Please let me know if you have more than 1 director). Each performing group will receive eight (8) wristbands in your welcome packet to distribute to chaperones, and trailer drivers etc... Bus drivers will receive a wristband if they request one.
- **Equipment Storage** – All schools should store all equipment in the wrestling room just outside the entrance to the performance area. (See Map) NOTE: This area is not easily accessible from the warm-up area. Please plan ahead. Small props and instruments may be stored in your homerooms. **Groups will go from Homeroom directly to warm-up and then to pick up equipment** just before going in to the Gymnasium to perform. Anything you need or want to use in warm-up should be stored in your Homerooms. Please be courteous to the performers on stage as you unload your equipment in the wrestling area (Move as quietly as possible). Because of the close proximity to the performance area, please refrain from playing instruments in this area. Each **Performing Group** will be given an area approximately 10' x 10' to store your equipment. We will also have some room in the hallway if needed. If you are anticipating that you will need more space, please contact me and we will try to work something out ahead of time.
- After equipment has been unloaded you will be escorted by your student hosts to your homerooms. Please abide by our school district policy, which prohibits food and/or beverages in any of the homerooms.
- Your student hosts will then walk you through your path to performance starting in the choir room for vocal warm –up and then moving to the Auditorium for a run-through and finishing in the Library with your critique. This should give you a good feel for what to expect when your time does arrive.
- Following your tour, the student hosts will take you to the main office where you can drop off any forms that need to be filled out.
- Your student hosts will remain with your group throughout the day and will take you to your warm-up area when it is time.
- Please plan your arrival time so that you will have sufficient time to prepare for your performance.

C. Homeroom Assignment

Star Power Hosting Teams 2016			
Classic Connection	RIG	Jefferson Connection	LVB
Peters, Marshall	Reinhard, Kiera	Girard, Ally	Thurman, Hannah
Backes, Maddie	Dufresne, Jeff	Mueller, Lexi	Dixon, Jacob
Bohman, Kirsten	Leifermann, Matt	Kalthoff, Evan	Mohr, Abby
Junge, Mitchell	Tordoff, Grace	Darula, Sienna	Holcomb, Keifer
Carver, Kaylie	Hoxie, Madyson	Larson, Lydia	Anderson, Cara
Malone, Mikyla	Meyerhoff, Elizabeth	Musolf, Allison	Hughes, Megan
Johnson, Emily	Capistrant-Kinney, Trigg	Whitehead, Megan	Lindstrand, Holden
Zapf, Josiah	Saunders, Mari	Larson, Jacob	Schoenfelde, Alyssa
Totino COS	Jefferson Jive	ESS	Totino Encore
Hanson, Jordan	Ombati, Diana	Beuning, Elizabeth	Gregoire, Tyler
Armenta, Armando	Strack, Dani	Dohm, Lizzie	Girard, Megan
Swee, Lauren	Hester, Maddie	Kuerschner, Clara	Vanderlinde, Wil
Zajac, Johnny	Nash, David	Phelps, Maddi	Rohde, Will
Tollefsrud, Hannah	Keating, Shannon	Capistrant-Kinney, Elsa	Fritz, Annah
Kuykindall, Sydney	Rothstein, Abby	Hansen, Mikayla	Lowden, Jessica
Sarcletti, Julia	Wagoner, Elsa	Thomas, Hannah	Varble, Hannah
Dock, Carson (CJ)	Richardson, Bobby	Hall, Mitchell	Thurk, Vanessa
Dufresne, Josh	Watts, Zach	Herschberger, Ryan	
Rhythm in Red	Bridge Street Singers	Natural Selection	Prima Voce
Sorensen, Katie	Scheuble, Devin	Ashley Gray	Grebe, Kendra
Colson, Morgan	Caldwell, Sammy	Luder, Ben	Checco, Montana
Hamby, Hunter	Sinclair, Gus	Haugland, Marya	Tesch, Nicole
Whitehead, Ryan	Dvorak, Tyler	Williams, Lucas	Weinand, Peter
Bina, Allison	Noble, Sabrina	Lowden, Allison	Lohman, Emma
Sorenson, Michelle	Stangret, Kathryn	Siebert, Katie	Rice, Ashley
Treichel, Maxx	Bijou, Micah	Weinrich, Andrew	Strack, Nathan
Jacobs, Cambria	Bares, Allison	Kirby, Annika	Buetow, Kaitlin
Valley View Voices	Wahlert Impulse	Spirit Lake Music Factory	Impact
Billstrom, Keller	Wedge, Coleden	Weisbecker, Sarah	Cueto, Alondra
Stulc, Trina	Thomas, Olivia	Sik, Cody	Miller, Michael
Honnold, Stephanie	Raisbeck, Zoe	Markiewicz, Michael	Luedke, Joel
Braland, Josh	Kjelden, Brock	Doeden, Elyse	Dixon, Dani
Lindqvist, Alice	Nielsen, Hannah	Johnston, Raina	Leonard, Emily
Ryan, Maggie	Sayre, Tori	Rickheim, Zoe	Nelson, Bailey
Schmieg, Eric	Shaw, Matt	Meyer, John	Wolf, Abby
Dufresne, Joey	Swick, Brandon	Dircks, Devin	DelMain, Tyler
State Street Singers	Vocalmotive	Band Room	
Anderson, Sophie	Larson, Jack		
DeLeo, MacKenzie	Griffin, Holland		
Gifford, Sarah	Hastings, Lily		
Albers, Ian	Naude, Lindsey		
Hughes, Andrea	Conley, Erin		
Sweeney, Maddie	Meier, Ellie		
Hanson, Jeremy	Carver, Lucas		
Beck, Sawyer	Knutson, Megan		

Revised version 1.1

D. Final Preparations – What to Expect

1) One Hour before Preliminary performance

- Your host will be prepared to bring you to the warm-up rooms 5 minutes prior to your scheduled warm-up time. Your warm-up is scheduled to begin 60 minutes prior to your performance. (Exhibition groups will have a shorter amount of time.) Feel free to use as much or as little of this time as you like.
- Once you enter the warm-up area one of our backstage crew will remain with you throughout your warm-up. They will remain in contact with the backstage manager to ensure that you are moving on time. Every effort will be made to ensure that we do not run behind schedule.
- Groups will get 20 minutes in the choir room for a vocal warm-up and then they will move to the Auditorium where they will get 25 minutes on stage with a full set of risers. Some groups like this additional time for vocal warm-ups and some do not. Use the time at your own discretion.
- Groups will go from the Auditorium to the wrestling room to pick up the rest of your equipment in preparation for your performance. Please remember that you must arrive at your staging area 15 minutes prior to your performance to ensure that you get your equipment out of the storage area prior to the preceding group exiting the stage. Your hosts and an adult stationed in that area will ensure that you are leaving on time.
- The Choir Room is a “live” room with tiered seating.

2) The Final 15 Minutes

- Your hosts and the backstage crew will bring your group to the staging area from the music wing 15 minutes prior to your scheduled performance time to ensure that you have priority retrieving your equipment from the wrestling room. (If you come too late you may be trying to get your equipment out at the same time that a group is trying to put their equipment away following their performance).
- Once you have your equipment, the entire group should line up in the hallway. Please be sure to note where the cue line begins. There will be signs to guide you and a Star Power Volunteer to assist you.
- **Please help us to keep your performers quiet during this time. I wish we could avoid this as you just got your kids fired up to melt our faces with their high energy and now they have to wait quietly in the hallway but there is another group performing on the stage.**
- Prior to your taking the stage the previous group will have cleared all of their equipment. The Star Power Stage Crew will sweep the stage/risers, place the piano, chairs, stands and power strips according to your directions.
- Each director will be allowed to inspect the stage to ensure it is set-up to their satisfaction prior to their set-up.
- You will be allowed to take the stage and begin your set-up once the Stage Manager gives you the cue to begin.
- **Your 25 minutes begin now.**
- The Master of Ceremonies will read your group’s bio while you are setting up your equipment.
- When you are completely set-up and ready to begin, please cue the MC to let him know that you are ready.
- The MC will check with the judges to ensure that they are ready. When they are ready the MC will then come back to the stage to announce the following: And Now Ladies and Gentlemen from _____ please welcome to the stage _____.
- This is your cue to begin. Your timing will stop when all equipment and performers have cleared the gym.

3). One Hour before Finals performance

- You should expect the same type of schedule for Finals that you did in the prelims.

V. General Information

A. Parking/Bus Drivers/Directors

- After your choir has entered the building and checked in, all busses and other large vehicles will be directed to the appropriate parking area.
- Directors and Bus Drivers are invited to enjoy our hospitality room located in the Teacher's Lounge just past the cafeteria. Take your shoes off, relax a little, chat awhile, and enjoy our delicious hot coffee.

B. Admission/Programs

- All performers should have their hands stamped before they leave the bus. If Performing members arrive separate from the bus, they will need to have their hand stamped at the North Entrance.
- Director's spouses will be admitted as our guests. Please ask your student hosts for a wristband.
- Admission prices will be:
 - Adults
 - \$10.00** Saturday preliminary performance
 - \$9.00** Saturday evening Finals performance
 - \$17.00** Full – Saturday daytime and evening performances
 - **Seniors / Students**
 - \$7.00** Saturday preliminary performance
 - \$6.00** Saturday evening Finals performance
 - \$12.00** Full – Saturday daytime and evening performances
- Children under 5 will be admitted free.
- The auditorium will be completely cleared after Awards Ceremony at the end of the afternoon session.
- ****Eating and / or drinking of soda, coffee, etc. is allowed only in the commons area. Bottled water is allowed in the gymnasium.**

C. Homeroom

- We have just completed a major remodel and addition to our school. We are very proud of the facilities and we know that you will respect and take care of our rooms. Many of the rooms are equipped with new Smart Boards. We ask that you respectfully not touch or play with this new equipment. We will do our best to hide and protect them but we need your help in ensuring that nothing is damaged. Any damages will be billed to the schools.
- Your hosts and hostesses will escort the choir to their homeroom and be with you throughout the day to answer any questions and be of assistance. These room assignments will be in the Director's Packet. Homerooms will be locked while you are performing.
- Your homeroom will be locked while your choir is in warm-up and performing. A key will be with the hall monitor at all times.

D. Reserved Seating

- To encourage support for the performing choir, the first three rows will be reserved for fans of the performing choir. After your group is finished performing, please vacate these three rows to make room for fans of the following choir. This rule will not be in effect for the final competition.

E. Concessions

- Concessions will be available throughout the day in the commons and at the concession stand in the main hallway. We will be offering a diverse menu from morning until night.

F. Videotaping

- We ask the parents to refrain from videotaping or using flash equipment during the daytime or the final competition. This is very distracting to the choir participants. DVDs will be processed and sold by BEC TV. Order forms will be available in the program book and throughout the building during the day.

G. First Aid

- A doctor will be on site and available throughout the day. If any services are needed, help can be readily attained at the Information Table in the Main Hall or in the Main Office.

H. Guest Parking/shuttle

- For visitors we will be utilizing three parking lots within close proximity to Waconia High School. **Lot A** is the school parking lot. **Lot B** is the Brook Peterson lot just ½ block North of Waconia High School. **Lot C** is the Clearwater Middle School lot located a few hundred yards West of Waconia High School. A shuttle will be available for your convenience throughout the day.

I. Bus Driver Information

- After busses are unloaded the busses will be directed to their designated parking area in the new parking lot on the West side of the building. Our Greeters will be asking for the drivers cell phone numbers in case of emergency.
- Bus Drivers are invited to enjoy our hospitality room located in the Teacher's Lounge just past the cafeteria. Take your shoes off, relax a little, chat awhile, and enjoy fresh fruit, breakfast treats, juice, and hot coffee.
- Bus Drivers will be receiving complimentary wristbands that will admit them into the competition.

Pink Form – Stage Crew/Band Eligibility

School _____
Group Name _____
Director _____

Best Stage Crew

To qualify for the Best Stage Crew Award, this group must be comprised entirely of students from your school. Adults are allowed to help set-up props in the storage room, and bring them to the staging area, but once you enter the gym it must be all students who are doing the stage crew work.

_____ Yes, we are eligible for the Best Stage Crew Award

_____ No, We are not eligible

Best Band

To qualify for the Best Band Award, this group must be comprised entirely of students from your school.

_____ Yes, we are eligible for the Best Band Award

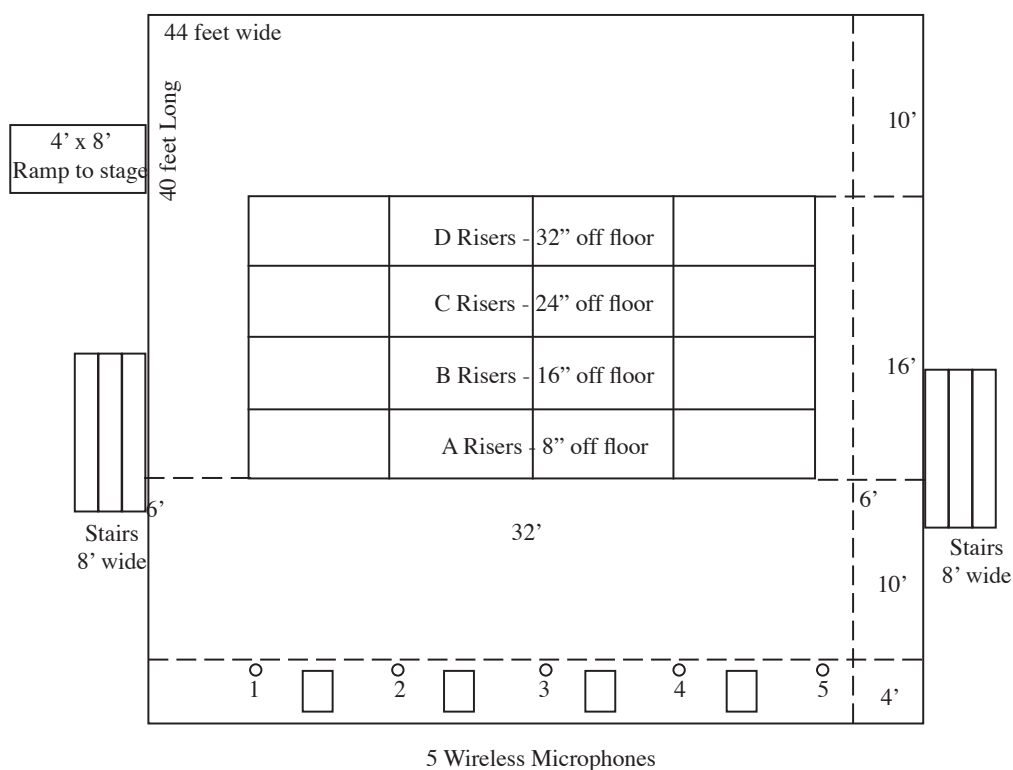
_____ No, we are not eligible for the Best Band Award

Blue Form – Stage Specs

To be used by our Backstage Crew to preset the stage for your performance

Star Power Stage Specifications and Set-up Instructions

Group: _____ Time: _____



Please draw in your stage set-up. Star Power will provide the following:
Acoustic upright piano, chairs, music stands, and 3 power strips.

_____ We will need (#) _____ music stands.

_____ We will need (#) _____ chairs

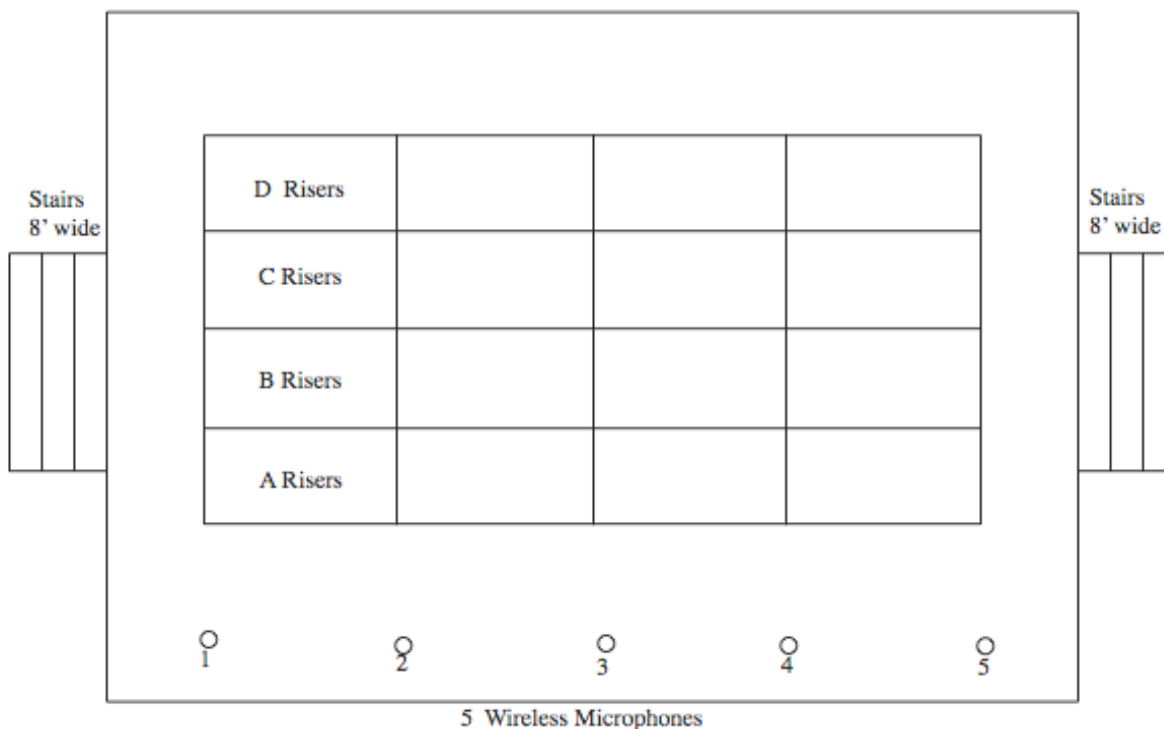
_____ We will use the Acoustic upright piano, please place on stage as indicated in the picture.

Yellow Form – Soloist Information

To be used by Sound Engineer and Judges to determine best soloist.

Star Power Solo Microphones

Group: _____ Time: _____



Soloist # 1 Name _____ Song _____ mic # _____
Place on risers _____

Soloist # 2 Name _____ Song _____ mic # _____
Place on risers _____

Soloist # 3 Name _____ Song _____ mic # _____
Place on risers _____

Soloist # 4 Name _____ Song _____ mic # _____
Place on risers _____

Soloist # 5 Name _____ Song _____ mic # _____
Place on risers _____

Soloist # 6 Name _____ Song _____ mic # _____
Place on risers _____

Directors/Adjudicators

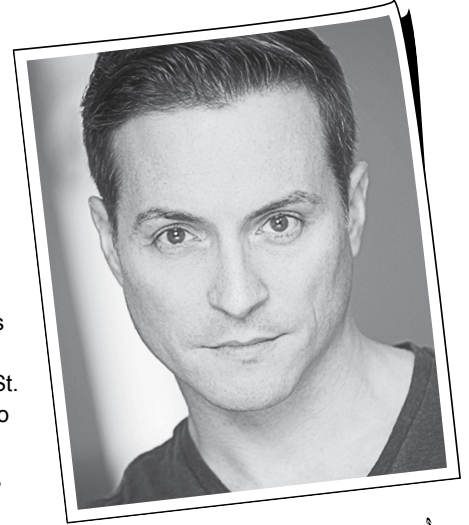
Handbook Part 2 Judges and Maps

February 13, 2016



Judges

Shane Rhoades is a native of Iowa, currently resides in New York City and La Crosse, WI. His career has afforded him the opportunity to perform all over the world, including Japan, Europe, Central America, Canada, and all 50 States. His Broadway credits include *The Boy from Oz*, starring Hugh Jackman, and he served as the Associate Choreographer for *How the Grinch Stole Christmas*. Off-Broadway he performed in *FAME* on 42nd Street. His national and international tours include *A Chorus Line*, *Chicago*, *West Side Story*, *Pippin*, *Seven Brides for Seven Brothers*, and *...Grinch*. Regionally he has had the pleasure of performing at Paper Mill Playhouse, Goodspeed Opera House, St. Louis MUNY, Sacramento Music Circus, North Shore Music Theatre, Pittsburgh CLO, Arena Stage, Atlanta TOTS, Houston TUTS, Ordway PAC, Kansas City Starlight, and Stages St. Louis. He is also a member of the Musical Theatre, Theatre and Dance faculty at Viterbo University in La Crosse, WI where he has choreographed *A Chorus Line*, *Little Women*, *Pippin*, *West Side Story*, and *Oklahoma*, as well as numbers for *Platinum Edition*.



Whitney Rhodes is a theatre artist based out of Minneapolis, Minnesota. She has been seen onstage with Theater Latte Da, Park Square Theatre, Old Log Theatre, Actors Theatre of Minnesota, Children's Theatre Company, Minnetonka Theatre and as a part of the Minnesota Fringe Festival. She is the creator, producer and performer of her one-woman cabaret trilogy *Where's My Parade?*, a spin-off cabaret *Where's My Tony?* and a series of benefit concerts (*The Could Be Project*, *Dear 27: Let Hope Win* and *Dear 28: The Songs in My Head*). Additionally, Whitney is the book writer of *For Tonight: A New Musical* which has been featured as a part of the New York Musical Theatre Festival, Goodspeed Festival of New Musicals, Isle of Man TheatreFest15 and Michigan State University. She is an Artistic Associate with The Catalysts, a Minneapolis-based theatre company that creates and produces new and inventive musical theatre dedicated to social justice and the full scope of human potential. The Catalysts have successfully produced four Top-10 selling original musicals at the Minnesota Fringe Festival since 2011. As an arts administrator, Whitney spent four years as the Manager of the SpotLight Musical Theatre Program at Hennepin Theatre Trust and is currently the Development Manager at Mixed

Blood Theatre. She is a proud Drake University alum with degrees in both Theatre and Advertising and a homegrown Nebraskan.

Brett Schrier is an accomplished music director, vocal coach, and composer in New York City. A graduate of The Boston Conservatory, Brett's conducting credits include *Hairspray* (National Tour), *42nd Street* (National Tour), *Chuggington!* (Disney Channel), *Les Miserables*, *Cats*, *Urban Cowboy*, *A Chorus Line*, and *Miss Saigon*. He also served as Music Director for *Broadway In South Africa*, *Broadway Under The Stars* in Sonoma, and *Scooby-Doo Live!*, produced by Warner Bros/Life Like Touring. As one of New York's "most talented contemporary writers," three of Brett's original musicals are currently licensed and performed around the country: *Take Two!*, *The Online Dating Musical!*, *Mr. Popper's Penguins*, and *Time Between Us*. Brett is on musical theatre faculty at Marymount Manhattan College, spends a great deal of time behind "the casting table," and continues to vocal coach some of Broadway's most gifted stars. Brett is Founding Director of Broadway Playground, a program providing the nation's top training and industry connections for performers across the country. Broadway Playground can be found at www.broadwayplayground.com. For more about Brett, visit www.brettschrier.com.



Judges



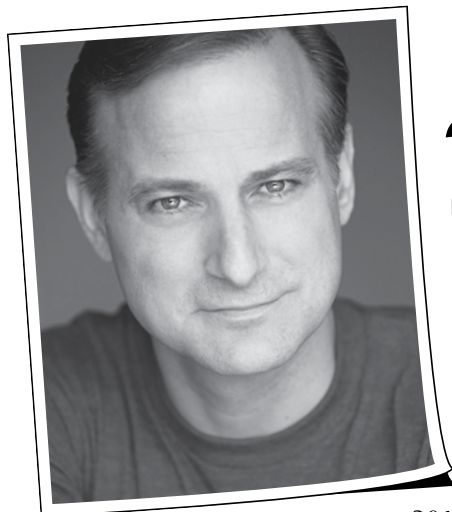
Adam Bassak is the Director of Bands at Baldwin-Woodville High School where he conducts the Symphonic Band, Marching Band, Pep Band, Pit Ensemble, Winter Drumline, Winter Guard and numerous chamber groups. His ensembles consistently receive top ratings. The Marching Blackhawks have finished in the top three bands at state each year, including three state championships. The Winter Drumline will be competing at WGI World Championships in April. Prior to teaching at Baldwin-Woodville Mr. Bassak held a similar position at the Royall School District in Elroy, Wisconsin.

A native of Chippewa Falls, Wisconsin, he earned his Bachelor's Degree and a certificate in Fine Arts Administration from the University of Wisconsin – Eau Claire. He also has continued his education at the University of Wisconsin – River Falls, University of Wisconsin – Eau Claire, and received his Masters in Educational Leadership through Silver Lake College in Manitowoc, Wisconsin. Mr. Bassak is an active clinician for both band and show choir throughout Wisconsin and Minnesota. He is also the saxophone coach for the Wisconsin State Honors Jazz Project and the Class A Representative on the WSMA State Marching Band

Committee. His professional affiliations include the Wisconsin Music Educators Association, National Association for Music Education and the National Band Association.

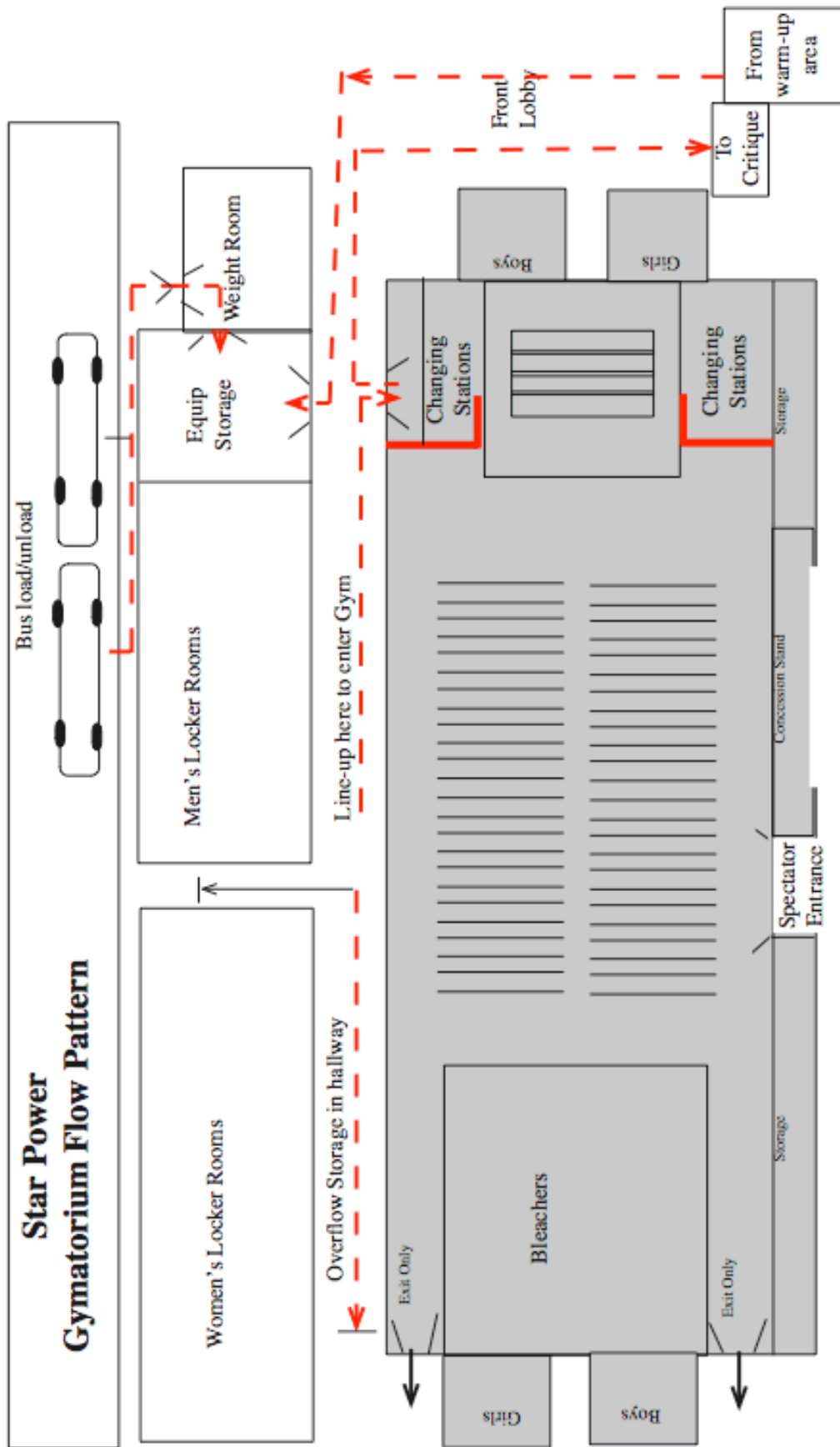


Alicia Fitchett is currently teaching choir in the Prior Lake-Savage Area Schools. Alicia graduated from the University of Wisconsin-Eau Claire with a Music Education-choral teaching emphasis. She is finishing her last semester of graduate school from the University of Wisconsin-La Crosse and will be receiving a Masters of Education-Professional Development in May. Previously Alicia taught middle and high school choir in La Crosse, WI at Logan and Central High School. She was the director of their varsity show choir, The Class Act and the district's high school musicals. Alicia has performed and directed many musicals and performances and is currently directing *Suessical the Musical*. Ms. Fitchett choreographed numerous show choirs, musicals and has cliniced for choirs, ensembles, and she has judged solo festivals in Wisconsin. She is originally from Green Bay, Wisconsin and she recently moved to Minneapolis last summer. Outside of teaching she sings in the Grace Trinity Community Church Choir, roots on the Green Bay Packers, and is busy planning her wedding coming up this summer.



Michael Gruber Broadway: original companies of *Miss Saigon*, *Swing!*, *Stairway to Paradise*, Jackie Mason's *Laughing Room Only*, and *My Favorite Year*, both Bill and Hortensio in *Kiss Me, Kate!*, the Tin man in *The Wizard of Oz*, Munkustrap in *Cats*, Mike in the final cast of *A Chorus Line* as well as Greg and Zach in the 2008 revival. Mr. Gruber also performed the role of Munkustrap in the movie of *Cats*, filmed at the Adephi Theater in London. Over the past 23 years, he has starred in over 50 regional productions across the country. Cast recording include: *42nd Street*, *Singin' in the Rain*, *Wonderful Town*, *Good News*, *Swing!*, *Follies*, *The Most Happy Fella*, *My Favorite Year* and *The Music Man*.





Very important information Please read to ensure smooth transitions of groups.

Arrival

- Our Star Power volunteers will greet your bus as you arrive. Please remain on the bus until you have been given instructions by our volunteers.
- It may be necessary to wait a few minutes to unload busses if a performing group is in the process of getting their equipment in preparation to perform.

Performance

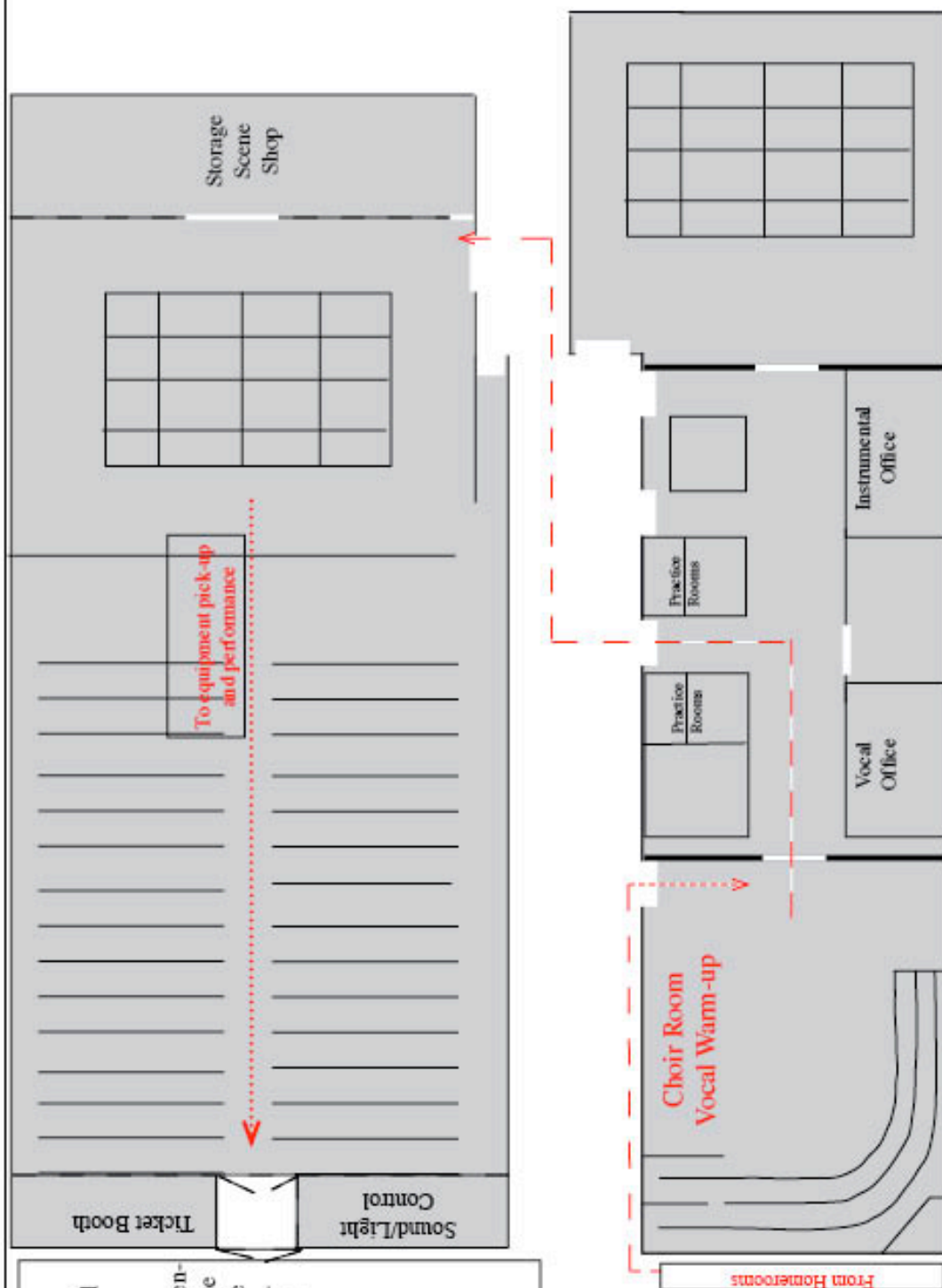
- Please arrive at the equipment storage area 15 minutes prior to your performance time to get your equipment from storage.
- Please have your group lined up in the hallway as shown and out of the equipment room 5 minutes prior to your performance time to allow the group coming off the stage to get their equipment out and back into storage.
- Once the previous group has left the gym and cleared the way, your group may enter the staging area.

Star Power Music Wing Flow Pattern

- Groups will come from homerooms directly to the Choir Room for warm-up
- If you want to use instruments in warm-up, you will have to bring them from your home room or pick them up from the Wrestling Room storage area prior to warm-up. Otherwise you will pick up your Instruments/equipment just prior to lining up in the hallway outside the Gymnasium.
- Auditorium will have Risers set up with identical dimensions as the Gymnasium.

NOTE:

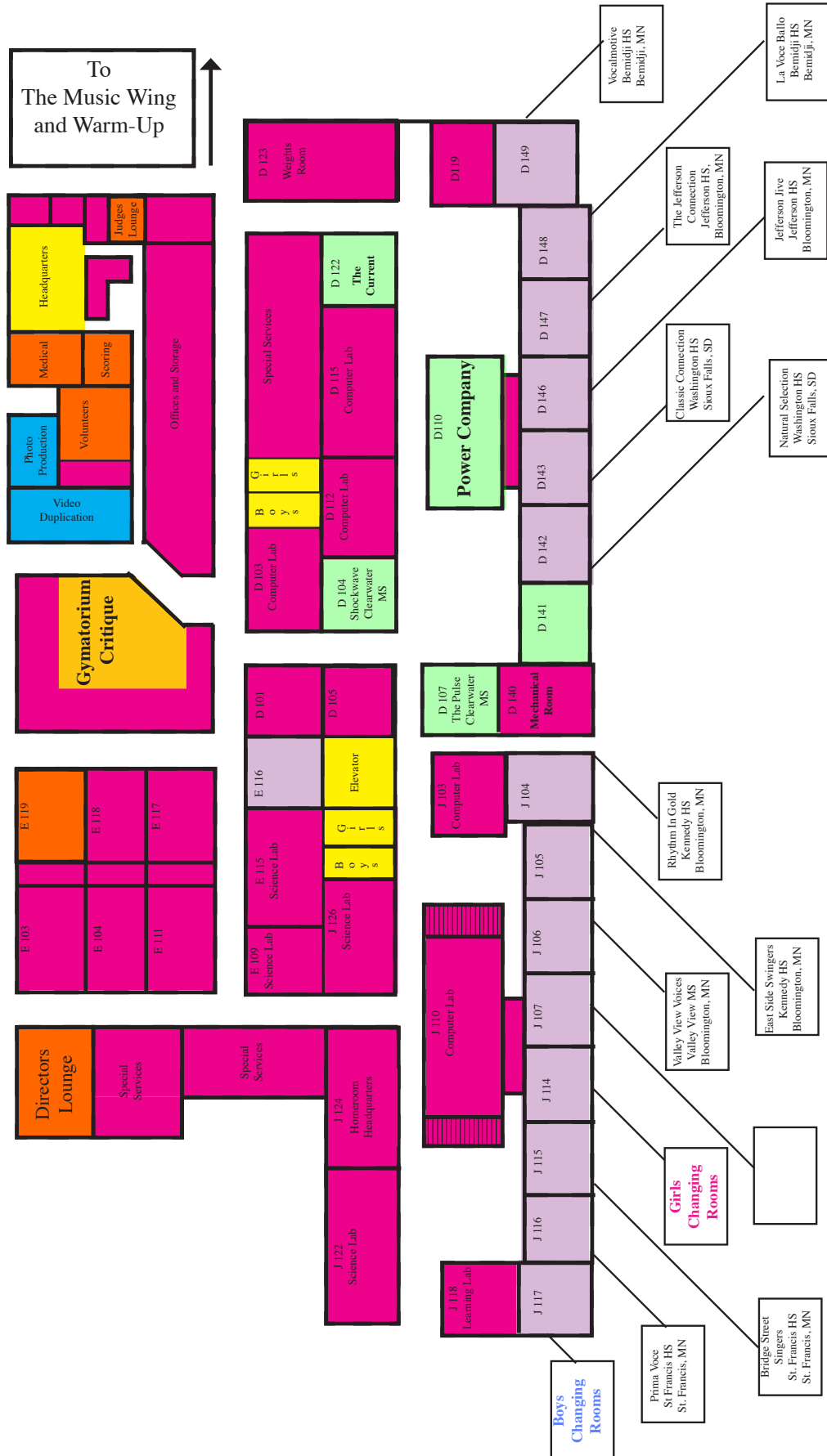
There is a lot going in this space. We will have two "Traffic Cops" in the Music Wing at all times to ensure that groups move smoothly through the warm-up area and arrive in time for their performance.



Waconia High School

Homeroom Assignments

1/29/16



Waconia High School
“The Loft”

